

Association of Psychology Training Clinics (APTC)

After 30 years as the Association of Directors of Psychology Training Clinics (ADPTC), our name is changing.

As of March 1, 2010 we are

APTC (ap' tic)

We remain the international organization that focuses on pre-internship practicum training in professional psychology (clinical, counseling, school, health, and combined) doctoral graduate programs.

LEARN MORE ABOUT US AT (FOR NOW): www.adptc.org

ORGANIZATION STRUCTURE, BUSINESS MODELS, & FINANCES OF TRAINING CLINICS

Colleen Byrne, Ph.D.

University of Maryland

Director, University of Maryland Psychology Clinic

Phyllis Terry Friedman, Ph.D.

Saint Louis University

Director, Psychological Services Center

DEFINITION:

APTC Guidelines for Training Clinics:

The primary function of a psychology clinic is to train graduate student to be practitioners and applied scientists according to the model of their training programs.

Models of training programs:

PROGRAMS:

Clinical

□ Scientist-practitioner

Counseling

□ Clinical-scientist

School

□ Scholar-practitioner

Combined

OVERVIEW

PSYCHOLOGICAL CLINIC UNIVERSITY OF MICHIGAN

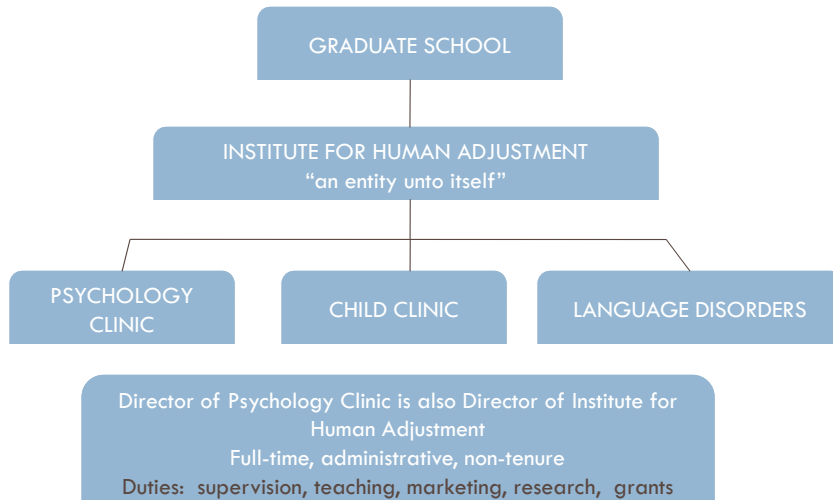
Mission: Training, strong service component, research conducted

Clients: 350, 50% community, 50% university

Clinicians: 6 clinical Ph.D. students, 2-3 social work students, 6-8 interns, 1 post-doc

Scientist-Practitioner, Clinical

ORGANIZATIONAL STRUCTURE



SUPERVISION

- Supervisors employed by clinic (not University faculty)
- The modal half-time student receives 2 hrs individual supervision and 1.5 hours group supervision
- Specialty supervision (e.g., couples) is available if needed

FINANCING

Clinic Income: \$350,000

\$200,000+ from insurance (it's complicated)

The University provides \$250,000

Clinic income + University contribution funds salaries for the Director, a full-time Office Manager, an Insurance Specialist, interns and postdocs, and clinic expenses

OVERVIEW

PSYCHOLOGY CLINIC UNIVERSITY OF MARYLAND

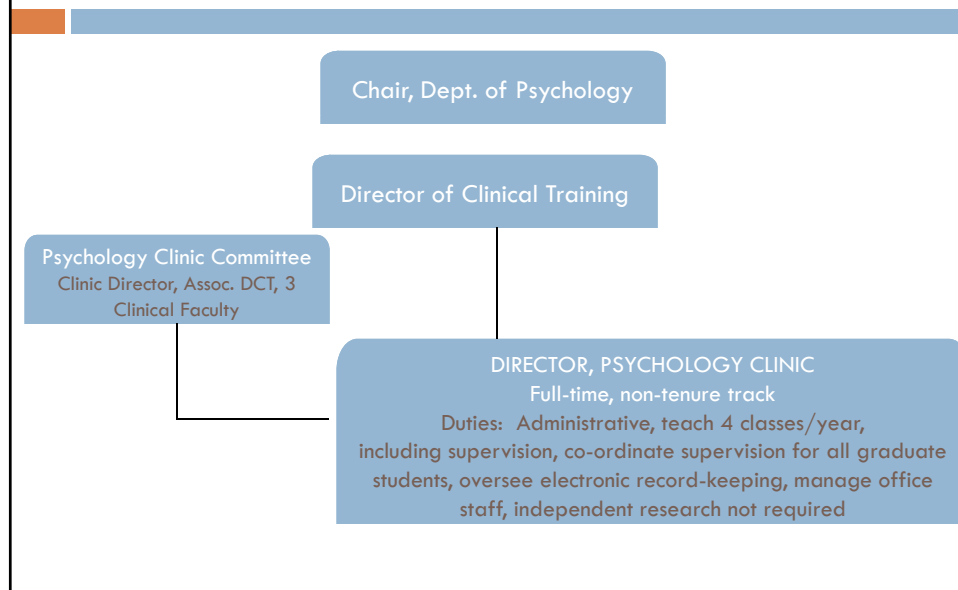
Mission: Training, service to the University and community using evidence-based protocols, research

Clients: 45% students, 5% staff, 50% community

Clinicians: 8-16 clinical Ph.D. students

Clinical-Scientist, Clinical

ORGANIZATIONAL STRUCTURE



SUPERVISION

- All supervisors are core faculty
- 3 – 6 students meet for 3 hours of group supervision a week.
- Group is supplemented by individual supervision which varies by student's need
- Students in their last semester of in-house training can be assigned a junior trainee to supervise.
- Maximum of 16 hours a week, must have an on-site PhD supervisor and contain a didactic component

FINANCING

Clinic Income: \$32,000 (therapy & assessment)

All Clinic expenses paid by Psychology Dept
Includes salary for Director, half-time administrative assistant, half-time graduate student assistant, testing materials, treatment manuals, etc.

Revenue does not offset expenditures

Clinic is viewed as a training expense and is not expected to make money

OVERVIEW

PSYCHOLOGICAL SERVICES CLINIC RUTGERS UNIVERSITY

GRADUATE SCHOOL OF APPLIED AND PROFESSIONAL PSYCHOLOGY

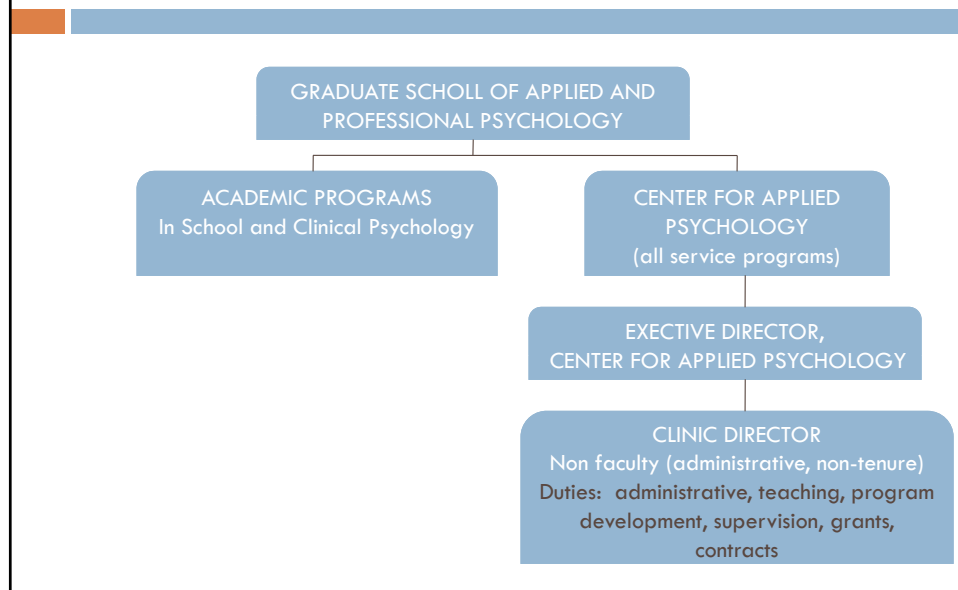
Mission: Training, serve the underserved, research/scholarship

Clients: 450, 70% community, 30% students, 10-20% are research participants

Clinicians: 100 (PsyD, School, and Ph.D.)

Scholar-Practitioner, Clinical/School

ORGANIZATIONAL STRUCTURE



SUPERVISION

- 300, off-site, licensed psychologists provide pro bono supervision
- 5-6 Rutgers faculty and 10 paid, non-faculty provide on-site supervision
- Groups of 3 students receive 1.5 hours group supervision per week
- Students travel to off-site supervisors' offices for weekly individual supervision
- Starting in the 1st year, students also participate in outside practica

FINANCING

Clinic Income: \$145,000

The University pays for Director & 3 Graduate student assistants

Clinic revenue pays for full-time office manager, evening receptionist, all supplies and materials

OVERVIEW

PSYCHOLOGICAL SERVICES CENTER SAINT LOUIS UNIVERSITY

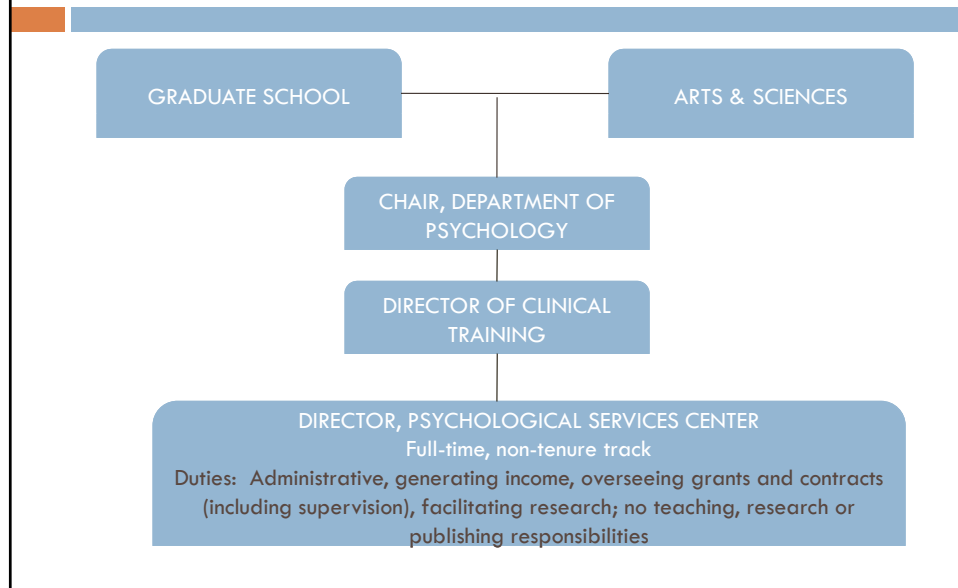
Mission: Training, service, generating income to support students, faculty and the program

Clients: 400 cases per year, from the community (schools, other professionals, yellow pages)

Clinicians: 32 clinical Ph.D. students

Scientist-practitioner, Clinical

ORGANIZATIONAL STRUCTURE



SUPERVISION

- All supervisors are clinical faculty
- All students receive 3 hours/week (2 group, 1 individual)
- External practicum (20 hours per week in addition to the training clinic), is supervised by clinicians at the site

FINANCING

Clinic Income:

Fee-for-service: \$60,000

Grants (\$26,000)

Contracts (\$60,000)

Paid external practicum (\$120,000)

University pays for Director's salary, $\frac{3}{4}$ time Office Manager, $\frac{1}{2}$ Graduate Assistantship

OVERVIEW

INSTITUTE FOR MARRIAGE & FAMILY COUNSELING UNIVERSITY OF MIAMI

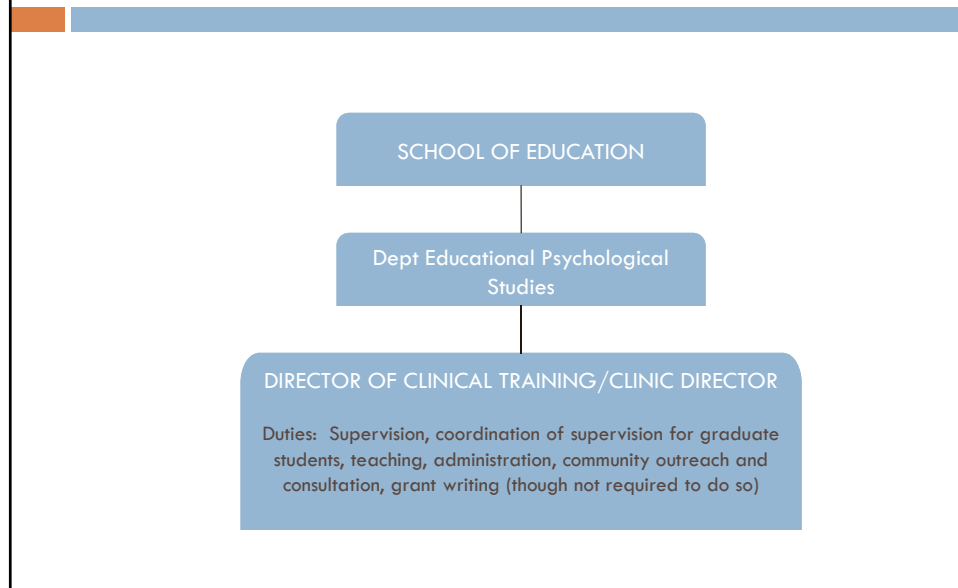
Mission: Training, providing affordable services to the community

Clients: 400 cases/year
community; 75% Hispanic

Clinicians: 6 Ph.D., 25 MA in MFT program

Scientist-practitioner, Counseling

ORGANIZATIONAL STRUCTURE



SUPERVISION

- Students receive 1 hr/week of individual supervision, 2 hrs/week group supervision with 4-6 students per group
- Supervisors: 50% core faculty, 50% adjunct
- MA students required to have outside practicum
- “In-placement” (10 hrs/week in the Clinic) and 10-15 hr/week externship completed simultaneously
- PhD students spend their 1st yr in clinic; 2 & 3rd years on externship

FINANCING

Clinic Income: \$20,000

Bulk of funding comes from the Department of Educational Psychological Studies in the School of Education

Director's salary paid through Department of Educational Psychological Studies. Office Manager's salary covered by a grant.

Revenue from services used to pay for supplies, testing materials, etc.

Revenues do not offset expenditures

MUST HAVES: GUIDELINES

Financing (clinics are not necessarily self-supporting)

Infrastructure (clerical, space)

Structure of the clinic consistent with its Mission

Ability to recruit clients

Ability to provide quality supervision